

# DRINK MACHINE

## USER MANUAL

Operating Instructions



**D25 “Bubbler”**

# DONPER **USA**

Donper USA  
500 Stonegate Dr.  
Katy, TX 77494

1-844-366-7371  
[sales@donperusa.com](mailto:sales@donperusa.com)  
[www.donperusa.com](http://www.donperusa.com)

# Table of Contents

I	Explosion Diagram.....	1
II	Safety Precuations.....	2
III	Unpacking & Setup.....	3
	1. Unpalletize Machine    2. Unpack & Inspect Parts    3. Routine Maintenance Operations	

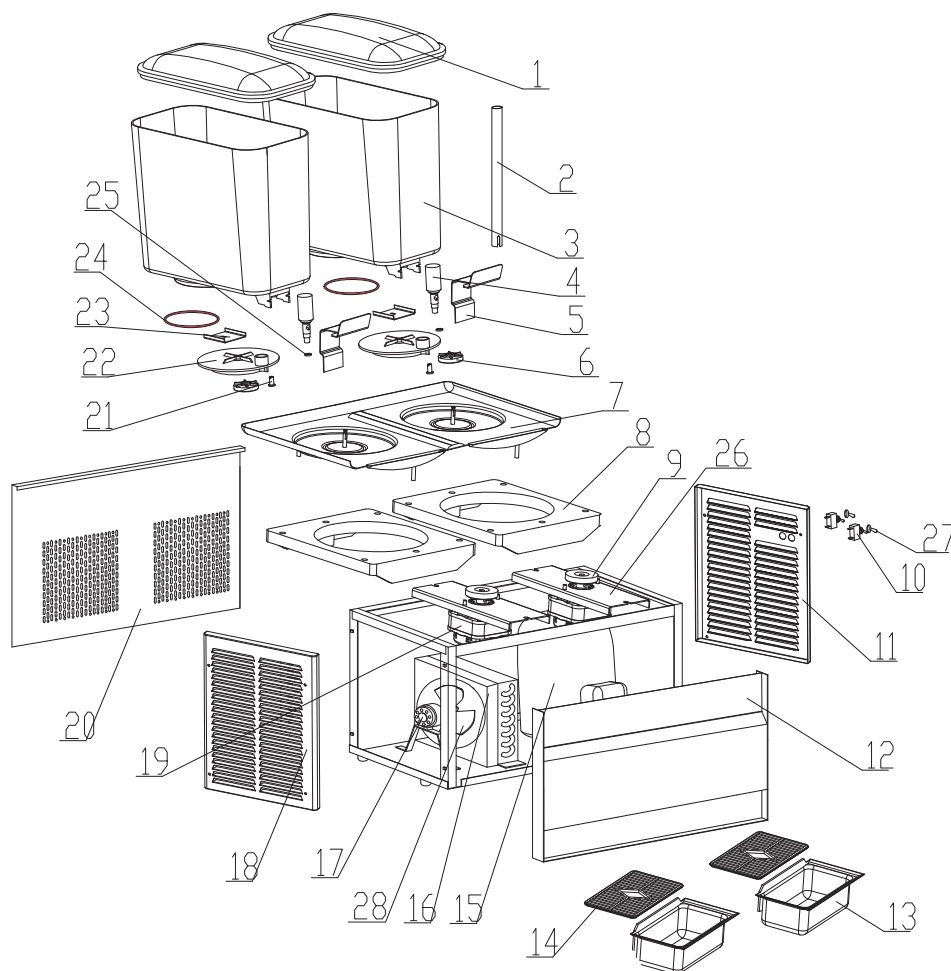
---

## SPEC SHEETS

---

D25	Spec Sheet.....	4,5
	1. Dimenstions    2. Parameters	

# I EXPLOSION DIAGRAM



1	Cover	8	Supporting block	15	Compressor	22	Pump cover
2	Spray tube	9	Magnetic clutch	16	Condenser	23	Fastener
3	Bowl	10	Switch	17	Fan motor	24	D-ring
4	Dispensing valve	11	Right panel	18	Left panel	25	O-ring
5	Handle	12	Front panel	19	Pump motor	26	Thermostat
6	Impeller	13	Drip tray	20	Rear panel	27	Switch cover
7	Evaporator	14	Cover of drip tray	21	Bearing sleeve	28	Fan

## II SAFETY PRECAUTIONS

All safety regulations, local codes, and instructions that appear in the manual or on the equipment must be observed to ensure personal safety and to prevent damage to the machine. If equipment is used in a manner not specified by the manufacturer, the protection covered by the warranty will become null and void.

### ICONS FOUND THROUGHOUT THIS DOCUMENT AND WHAT THEY REPRESENT



**WARNING:** Risk of harm to the operator or machine if performed incorrectly.



**CAUTION:** Informs the operator of a task that may lead to harm if instructions are not followed.



**IMPORTANT:** Represents an extremely important step or note the user must be aware of.



**NOTE:** Non-hazardous, informational text.

## III UNPACKING & SETUP

### WARNING



Unpalletizing requires lifting. Two or more personnel should remove the machine from its packaging and place it in its final operating location. Failure to do so may result in severe injury or damage.

### UNPALLETIZE MACHINE

1. To remove all sides and cover of shipping box, unfold all tabs on the shipping box from their closed position to the open position using a flat-head screwdriver, and a hammer if needed.
2. Remove plastic wrapping from around the machine.
3. Being careful not to scratch or dent the machine panels, remove both side panels with a phillips-head electric screw driver.
4. On the bottom of the machine there are 2 stabilizing bolts securing the machine to the bottom of the shipping pallet/box. Using a #12 wrench and a #12 ratchet carefully remove both bolts.
5. Reattach both side panels using the phillips-head electric screw driver.

### CAUTION



The machine is designed to operate in normal ambient temperatures of 60-75°F. Operating in higher ambient temperatures will result in less than optimal performance.

6. Prepare the area where the machine will be placed.
7. Place the machine in its final location according to the Installation Requirements.



## D25 DRINK MACHINE

"Bubblers" are much more than just a cold drink dispenser, as these circulate the drink from the bottom to the top of the bowl using a pump so that the drink cascades down all sides of the bowl. for great visual merchandising.

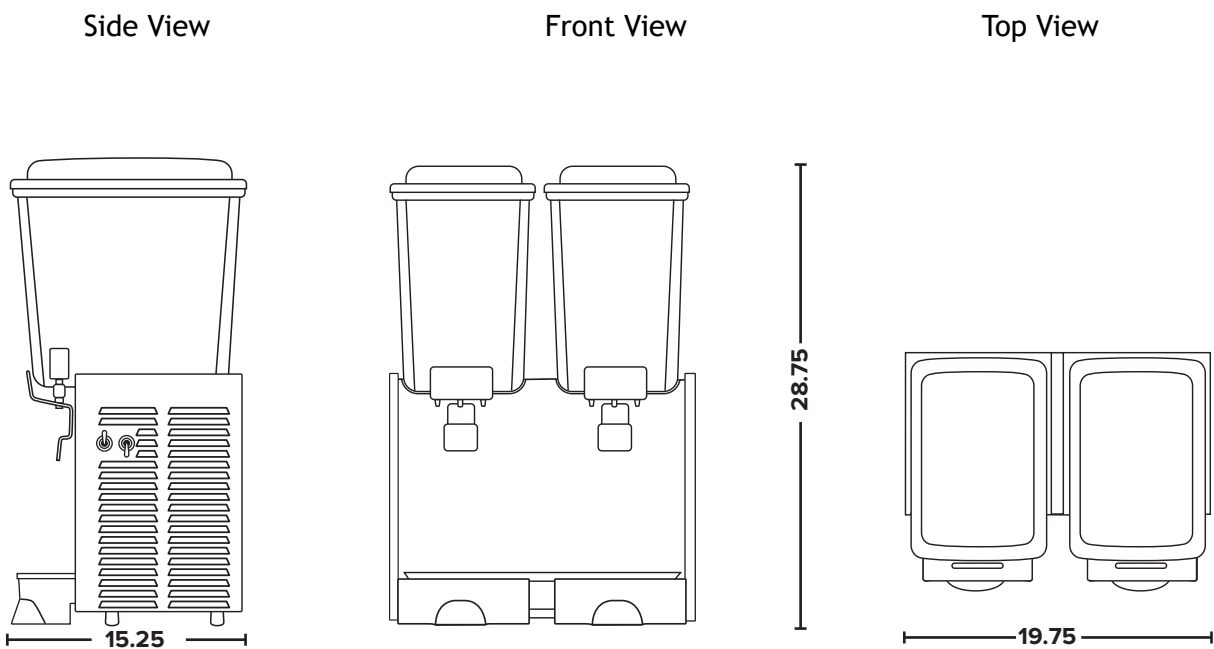
The bowls are made of poly carbonate for easy cleaning and long life.

The machine design is easy to use (just pour in the mix and turn on the power).

### Features

- Self-contained air cooled countertop model
- Stainless steel allow easier cleaning and less maintenance
- Super-strong, virtually unbreakable polycarbonate bowls and covers give lasting durability
- 1 motor per bowl, 1 switch per bowl - Each bowl operates independently of each other.
- Large 9.5 gallon, dishwasher safe, plastic bowls.

\*The D25 is manufactured for Donper USA by a third party.



Measurements in inches.

Size and Capacity

Number of Bowls	2
Bowl Capacity (each)	4.75 gallons (18 L)
Total Machine Capacity	9.5 gallons (36 L)
Height	28.75 in (730.25 mm)
Width	19.75 in (501.65 mm)
Depth	15.25 in (387.35 mm)
Weight	75 lbs (35 kg)

Electrical

Voltage	115 v
Phase	Single
Current	3.7 Amps
Compressor	1/3 HP
Hertz	60 Hz Standard US
Plug Type	115 volt Standard Plug

Distributed By:

# DONPER USA

Need Parts? [parts@donperusa.com](mailto:parts@donperusa.com)

Visit Our Online **Parts Store** 

Technical Support

**1-844-366-7371**

